

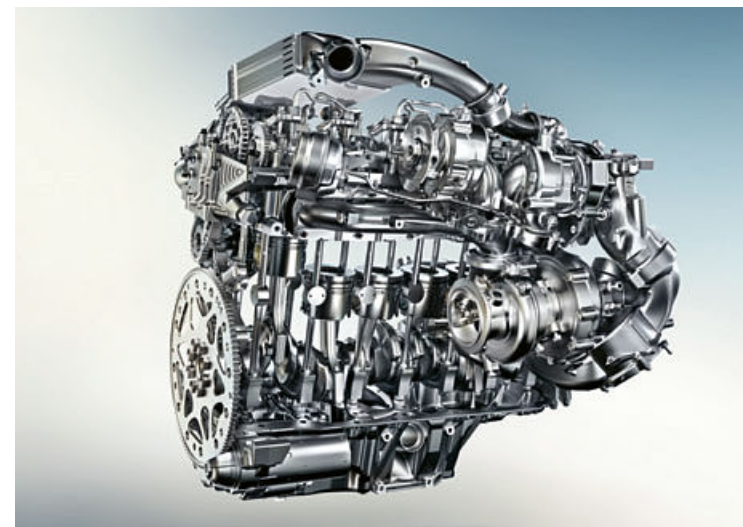


Sheer  
Driving Pleasure



**THE BMW X6.**





---

## THE BMW X6. UNLIMITED. POWER.

---

### THE MODEL SHOWN.

**04 BMW X6 xDRIVE50i WITH  
PURE EXTRAVAGANCE DESIGN:**

BMW TwinPower Turbo V8-cylinder petrol engine, 330kW (450hp), 20" light alloy wheels V-spoke style 597 with mixed tyres, exterior painted in Sparkling Storm Brilliant Effect, Adaptive LED headlights, seats in exclusive Ivory White/Black Nappa leather with grey contrast stitching, fine-wood interior trim in American Oak.

Further information on fuel consumption and CO<sub>2</sub> emissions can be found on pages 48 | 49 or consult your BMW partner.

---

### INNOVATION AND TECHNOLOGY.

**18 BMW TWIN POWER TURBO ENGINES:**  
At the heart of BMW EfficientDynamics.

**20 BMW EFFICIENT DYNAMICS:**  
Maximum driving pleasure, minimum fuel consumption.

**22 BMW CONNECTED DRIVE/BMW PERSONAL COPILOT:**  
Digital Services & Driver Assistance.

**24 CHASSIS:**  
Innovative systems for more driving pleasure.

**25 SAFETY:**  
State-of-the-art technology.

---

### INDIVIDUALITY AND CHOICE.

**28 EQUIPMENT:** BMW Pure Extravagance design, M Sport package and BMW M Performance automobiles, BMW Individual, equipment highlights, wheels and tyres, Original BMW Accessories.

**44 COLOURS:** Exterior and interior colours.

**48 TECHNICAL DATA:** Vehicle weight, engine, transmission, driving performance, fuel consumption, wheels and technical drawings.

**50 BMW SERVICE:** BMW Service, BMW Financial Services and BMW Experience.

NEW



### DIGITAL DISCOVERY: THE NEW BMW BROCHURES APP.

More information, more driving pleasure: The new BMW brochures app offers you a brand new digital and interactive BMW experience. Download the BMW brochures app for your smartphone or tablet now and explore new perspectives of your BMW.

Depending on the terms of your mobile phone plan you might incur additional costs for accessing the Internet.



# BREAKS

ALL RULES AND  
CONVENTIONS. NOT TO  
MENTION HEARTS.

A way of life: the BMW X6. The striking Sports Activity Coupé from BMW confidently rules the road and is destined to stand out everywhere it goes. Its unique concept – a blend of the very best of an athletic coupé coupled with the powerful dynamism of a BMW X – breaks all existing conventions, instantly propelling this exceptional vehicle to its rightful position as the king of the road.







**EXPECT**  
THE EXCEPTIONAL.





The mark of a true athlete: The rear of the BMW X6 makes no secret of its powerful X-pedigree. Horizontal contours highlight its wide stance, making the dynamism of its quintessential L-shaped rear lights with full LED technology stand out even more.





## **BEND THE LAWS OF PHYSICS.**

At the heart of the action: Thanks to its superior handling and dynamic driving characteristics, in the BMW X6 you'll always be on top in traffic. The powerful 8-cylinder petrol engine with BMW TwinPower Turbo technology and eight-speed Steptronic sport transmission means that the BMW X6 xDrive50i accelerates from 0 to 100km/h in an astounding 4.8 seconds.

The BMW S 1000 R is just as dynamic when it commands its space on the road: With 121 kW (165 hp) and a maximum torque of 114 Nm at 9,250 rpm, this roadster is poised to meet any challenge. The uncompromising design and highly advanced technology also ensure that the BMW S 1000 R is always in the lead.





**LUXURY HAS ALWAYS  
BEEN WRITTEN  
WITH AN X.**

Your seat awaits you: The whole interior of the BMW X6 was designed with the driver in mind. Thanks to the vehicle's elevated seating position, you are guaranteed a superior overview of the surrounding traffic. Expertly crafted, exclusive materials create an interior atmosphere reminiscent of a coupé, while the elegant contours that sweep from the cockpit to the rear perfectly express the coupé-style personality of the BMW X6.





Wherever life may take you – the BMW X6 will bring you to your destination. Its design: extravagant. Its driving dynamics: thrilling to the extreme. What makes it different is what makes it so irresistible. Discover it for yourself: the BMW X6.



**WON'T FIT IN A MOULD. BUT FITS  
YOU TO A TEE.**





## INNOVATION AND TECHNOLOGY.

**BMW TWIN POWER TURBO ENGINES:** At the heart of BMW EfficientDynamics.

**BMW EFFICIENT DYNAMICS:** Maximum driving pleasure, minimum fuel consumption.

**BMW CONNECTED DRIVE:** Digital services & apps.

**BMW PERSONAL COPILOT:** Intelligent driver assistance systems.

**CHASSIS:** Innovative systems for more driving pleasure.

**SAFETY:** State-of-the-art technology.



## BMW TwinPower Turbo engines. At the heart of BMW EfficientDynamics.

Thanks to BMW TwinPower Turbo technology, the innovative new generation of BMW petrol and diesel engines from the BMW EfficientDynamics engine range guarantee even more thrilling power delivery and excellent responsiveness even at low engine speeds, while also keeping fuel consumption and emissions to a minimum. Increased efficiency and optimal dynamics make driving a BMW more enjoyable than ever.



### BMW TWIN POWER TURBO 8-CYLINDER xDrive50i<sup>3</sup> PETROL ENGINE.

The powerful BMW TwinPower Turbo 8-cylinder petrol engine combines two turbochargers with Double-VANOS. It is also extremely fuel efficient, thanks to High Precision Injection. With an output of 330 kW (450 hp), it can accelerate from 0 to 100 km/h in an incredible 4.8 seconds. The result is a massive maximum torque of 650 Nm at engine speeds between 2000–4500 rpm.

### BMW X6 xDrive35i<sup>3</sup>.

- BMW TwinPower Turbo six-cylinder inline petrol engine with 225kW (306hp) and 400Nm of torque
- Acceleration 0–100km/h: 6.4s; top speed: 240km/h
- Combined fuel consumption: 8.5–8.6l/100km<sup>1</sup>
- Combined CO<sub>2</sub> emissions: 198–200g/km<sup>1</sup>

### BMW X6 xDrive50i<sup>3</sup>.

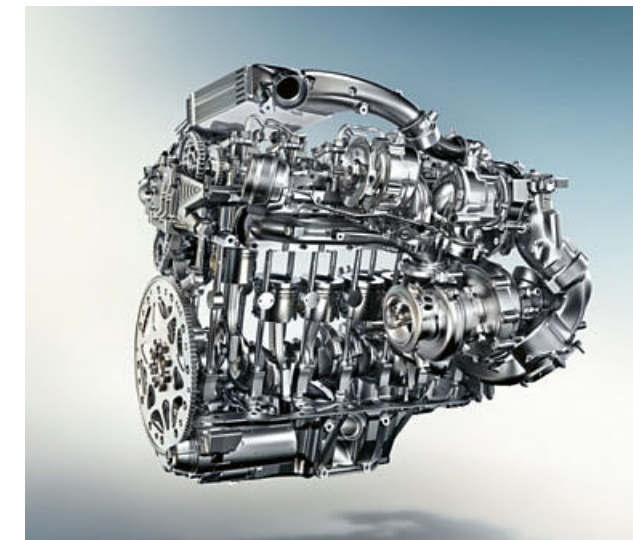
- BMW TwinPower Turbo 8-cylinder petrol engine with 330 kW (450 hp) and 650 Nm of torque
- Acceleration 0 – 100 km/h: 4.8s; top speed: 250 km/h<sup>2</sup>
- Combined fuel consumption: 9.7 l/100 km<sup>1</sup>
- Combined CO<sub>2</sub> emissions: 225 – 227 g/km<sup>1</sup>

### BMW X6 xDrive30d\*.

- BMW TwinPower Turbo 6-cylinder inline diesel engine with 190 kW (258 hp) and 560 Nm of torque
- Acceleration 0 – 100 km/h: 6.7 s; top speed: 230 km/h
- Fuel consumption combined: 7.0–7.1 l/100 km<sup>1</sup>
- CO<sub>2</sub> emissions, combined: 183–187 g/km<sup>1</sup>

### BMW X6 xDrive40d\*.

- BMW TwinPower Turbo 6-cylinder inline diesel engine with 230 kW (313 hp) and 630 Nm of torque
- Acceleration 0 – 100 km/h: 5.8 s; top speed: 240 km/h
- Fuel consumption combined: 7.0–7.1 l/100 km<sup>1</sup>
- CO<sub>2</sub> emissions, combined: 183–187 g/km<sup>1</sup>



### BMW X6 M50d\*.

This M Performance TwinPower Turbo six-cylinder inline diesel engine combines CommonRail direct injection and a unique three-stage turbocharger with variable turbine geometry.

**More information can be found on pages 34 | 35.**

- M Performance TwinPower Turbo 6-cylinder inline diesel engine with 280 kW (381 hp) and 740 Nm of torque
- Acceleration 0 – 100 km/h: 5.2 s; top speed: 250 km/h
- Fuel consumption combined: 7.8–7.9 l/100 km<sup>1</sup>
- CO<sub>2</sub> emissions, combined: 205–209 g/km<sup>1</sup>

**M PERFORMANCE**

**BMW EFFICIENT DYNAMICS.**  
LESS EMISSIONS. MORE DRIVING PLEASURE.

<sup>1</sup> The data for fuel consumption, CO<sub>2</sub> emissions and energy consumption are determined in accordance with the measurement processes as defined by European Regulation (EC) 715/2007 in the applicable version. Data refer to a vehicle with base-level equipment in Germany, and the ranges account for differences according to the selected wheel and tyre size and the optional equipment and may change during the configuration process. Data for vehicles indicated with \* have already been determined on the basis of the new WLTP test cycle and adjusted for comparability with NEDC. For further information on fuel consumption and CO<sub>2</sub> emissions, please see pages 48 | 49 or contact your BMW partner.

<sup>2</sup> Electronically restricted.

<sup>3</sup> Models/engines for which these values apply can be ordered until 04/15/2018. Please ask your BMW Partner for more detailed information about the availability.





**BMW EFFICIENTDYNAMICS.**  
**LESS EMISSIONS. MORE DRIVING PLEASURE.**

[www.bmw.com/efficientdynamics](http://www.bmw.com/efficientdynamics)

## In the BMW X6.

### MORE POWER FROM LESS FUEL.

More power from 3 to 12 cylinders. Consume less, experience more – the BMW TwinPower Turbo engines offer the greatest possible dynamic performance with the greatest possible efficiency thanks to the newest injection systems, variable output control and sophisticated turbocharger technology. Whether diesel or petrol, and no matter how many cylinders, the engines from the BMW EfficientDynamics engine family allow markedly more agile power delivery and outstanding responsiveness even at low rpms, while being fuel-efficient and low in emissions.

### MORE DRIVING PLEASURE, LESS EMISSIONS.

Approximately 33% less CO<sub>2</sub> emissions since 2000: BMW EfficientDynamics is a technology package that includes not only the engine and drivetrain, but rather the whole vehicle concept, including intelligent energy management. Provided as standard in every BMW, a variety of innovative technologies contribute to continuously improving efficiency. Via engine efficiency measures, electrification, lightweight construction methods and optimised aerodynamics, BMW has managed to reduce the CO<sub>2</sub> emissions of its fleet by 33%.

### MORE SPEED, LESS WEIGHT.

Lower weight with intelligent lightweight construction. Special consideration for every last detail – intelligent lightweight construction means that the optimal material is found and implemented for each part of the vehicle. With extremely light high-tech materials such as aluminium and carbon fibre, BMW EfficientLightweight is pursuing the goal of minimising vehicle weight. That leads to even more dynamic performance, increased stability and heightened vehicle safety and comfort.

### MORE ENERGY, LESS PETROL.

100% driving pleasure with 0% local emissions: BMW eDrive technology makes it possible. Energy for electric driving is supplied by a high-voltage lithium-ion battery and maximised by a host of efficiency measures such as Brake Energy Regeneration. The all-new synchronous electric motor BMW has developed for BMW eDrive provides plentiful torque for acceleration, available all the way to the car's maximum speed, to combine sustainable mobility with outstanding agility and dynamic performance.



### BMW EFFICIENT LIGHTWEIGHT

BMW intelligent lightweight construction means using the right material for the right parts of the vehicle. The most suitable material is selected for each and every component. This philosophy, also known as BMW EfficientLightweight, is now an essential element of BMW EfficientDynamics and comes as standard in all BMW vehicles.

### AUTOMATIC START/STOP FUNCTION

The Automatic Start/Stop function switches off the engine when the vehicle comes to a temporary standstill (e.g. at traffic lights or in a traffic jam) to further reduce overall fuel consumption. When the driver presses down on the clutch (manual transmission) or takes their foot off the brake (Steptronic transmission), the engine automatically starts up again in a fraction of a second.

### BRAKE ENERGY REGENERATION

With Brake Energy Regeneration, the alternator generates electricity primarily when the driver brakes or takes their foot off the accelerator. Previously unused kinetic energy is thereby transformed into electrical energy that charges the battery.

### ECO PRO MODE

The ECO PRO mode helps drivers reduce their fuel consumption by up to 20 per cent<sup>1</sup>, depending on their driving style. A further five percent can be saved through use of the coasting function, the Route-ahead Assistant and ECO PRO Route.

<sup>1</sup> Determined in an internal BMW fuel consumption study.



# BMW Personal CoPilot

By your side, when you decide.

## THE INNOVATIVE BMW ASSISTANCE SYSTEMS.

Enjoy the ultimate in comfort and safety with the BMW Personal CoPilot. Whether it's for driving or parking, you can rely on BMW Personal CoPilot driver assistance systems in every situation. The most cutting-edge systems, such as radar, ultrasound and cameras, dependably register the vehicle's surroundings, forming the basis for intelligent driver assistance systems. Either activated when desired, or as emergency assistance in the background – BMW Personal CoPilot assistance systems make every journey in your BMW even safer and more enjoyable.

## CLOSER TO AUTONOMOUS DRIVING THAN EVER BEFORE.

Autonomous driving is not a utopia, it is the future: All over the world, BMW Personal CoPilot test vehicles are already driving completely independently without the driver's intervention and not only show impressively how mobility will change in the near future – they also offer an outlook on the next level of driving pleasure. Even today, BMW Personal CoPilot already offers a large number of intelligent semi-automated assistants that actively support and relieve the driver in almost every driving situation.

## SIMPLY PARK IT.

Intelligent parking assistance systems from BMW Personal CoPilot are available so that you don't just look forward to every ride in your BMW, but also to parking. For example, the Parking assistant already displays suitable parking spaces as you drive past and, depending on the BMW model, runs the parking process either partially or completely independently. But here too, automation will continue to advance, so that in the future it will be possible for vehicles without drivers to search for a parking space and execute the parking process autonomously.



## DRIVING ASSISTANT PLUS.

The optional Driving Assistant Plus<sup>1</sup> includes the Approach control warning and Lane Departure Warning as well as Active Cruise Control with Stop&Go function and the traffic jam assistant, which takes control over the speed, distance to the vehicle driving ahead and steering up to 60 km/h, increasing safety and comfort.

## DRIVING ASSISTANT.

Driving Assistant<sup>1</sup> combines the Lane Departure Warning and Approach control warning systems. When travelling at speeds between 10 and 60 km/h, the Approach control and person warning with light city braking function issues a warning if there is a risk of collision with vehicles or pedestrians, and brakes the vehicle in the event of an emergency. At speeds above approx. 70 km/h, the Lane Departure Warning draws the driver's attention to an unintentional lane change by means of slight vibrations of the steering wheel.

## SIMPLY PARK IT.

The Parking assistant makes parking parallel and perpendicular to the road easier. The system works by measuring even tight potential parallel parking spaces while driving past at a low speed. When a suitable space has been found, the Parking assistant takes over the steering, while the driver is responsible for selecting the correct gear, as well as pressing the accelerator and brakes.

## IN THE BMW X6.

The key visual for BMW Personal CoPilot shown here is an exemplary, artistic representation, which can deviate from the design and equipment of the BMW model described in this medium.

# BMW ConnectedDrive

Connected to be free.

## MORE THAN 20 SERVICES IN THE BMW CONNECTED DRIVE STORE.

The ConnectedDrive Services equipment forms the basis for intelligent BMW ConnectedDrive functions. This equipment also provides access to the BMW ConnectedDrive Store, in which services can be ordered and extended easily, any time and anywhere to suit the user's individual requirements – for example with the Concierge Service or Online Entertainment, which turn every drive into a convenient and entertaining experience.



## CONNECTED FOR OVER 40 YEARS.

Focused on the future – from the very beginning. By the 1970s, BMW had already made headway in connected mobility. Another milestone of the digital future was surpassed in 1999: vehicles with built-in SIM cards. Then came the first online functionality, Google Services and innovative display systems such as the BMW Head-Up Display. Throughout this process, the desires of the customer have always taken centre stage. In a first for a premium automobile manufacturer, BMW makes it possible to book and pay for services flexibly via the BMW ConnectedDrive Store, in the vehicle or on a computer at home. And with the introduction of BMW Connected and the Open Mobility Cloud, BMW is taking the next steps into the future of mobility.

## TIME-TO-LEAVE NOTIFICATION.

BMW Connected will inform you of the calculated departure time via a compatible smartphone or smart watch to ensure you arrive at your next destination on time. The system calculates the suggested departure time based on real-time traffic data.

## CONCIERGE SERVICE.

The Concierge Service puts the driver through to a BMW Call Centre agent at the press of a button. The agent will search for whatever you're looking for, such as a particular restaurant, the closest cash machine or where to find an open pharmacy. Upon request, they'll even send the required information directly to your navigation system.

## IN TOUCH 24/7 WITH BMW CONNECTED.

What would it be like if you were never late again? What if your BMW already knew your preferred destinations? How would you like reliable navigation, whether you're sitting in your vehicle or not? BMW Connected provides you with the information you want, when and where you want it. BMW Connected is a personal mobility assistant which facilitates your everyday mobility and aids you in reaching your destinations relaxed and on time. With the BMW Connected app, mobility-relevant information such as recommendations for optimal departure times are available at any time via smartphone or smartwatch and can be seamlessly transmitted to the car.

## WIFI HOTSPOT.

The equipment includes a built-in WiFi hotspot<sup>2</sup> using the LTE standard, which allows for a paid internet connection. The vehicle is connected via the built-in SIM card with a fee-based hotspot plan from a service provider.

## IN THE BMW X6.

<sup>1</sup> The functionality of this system may be limited by darkness and fog.  
<sup>2</sup> The WLAN Hotspot in the vehicle enables use of the internet with maximum LTE connectivity. Use incurs charges. Some ConnectedDrive Services may differ between countries. Please consult your local BMW partner for more information.



## Chassis.

A solid foundation for superior driving dynamics.



The intelligent **BMW xDrive four-wheel drive system** adapts outstandingly to even the most challenging road surface conditions, always offering ample traction. With xDrive and Dynamic Stability Control (DSC) as standard, your car remains directionally stable and controllable. xDrive flexibly distributes drive power to the front and rear wheels, performing lightning-fast adjustments to ensure optimum ground contact at all times. This allows xDrive to combine the advantages of a four-wheel drive – traction, directional stability and safety – with typical BMW agility.

The optional **Comfort Adaptive suspension package** combines the Adaptive suspension with air suspension on the rear axle for the ultimate in driving comfort. And for a sportier suspension set-up, either of the two more dynamic modes can be activated using the Driving Experience Control switch.

State-of-the-art driving dynamics: The optional **Dynamic adaptive suspension package<sup>1</sup>** allows drivers to optimise the vehicle's full dynamic potential. Encompassing both Dynamic Performance Control and Dynamic Drive, this package is guaranteed to deliver driving dynamics that are intrinsically sporty, while maintaining superior driving comfort, as evidenced by the extremely neutral steering response and minimal body roll in bends.

The best of both worlds: the optional **Professional adaptive suspension package<sup>1</sup>** combines the components of both the Comfort and Dynamic adaptive suspension packages, thereby providing the ultimate in driving comfort while maximising the driving dynamics. You can adjust your vehicle's suspension settings to suit your individual driving style at any time using the Driving Experience Control.

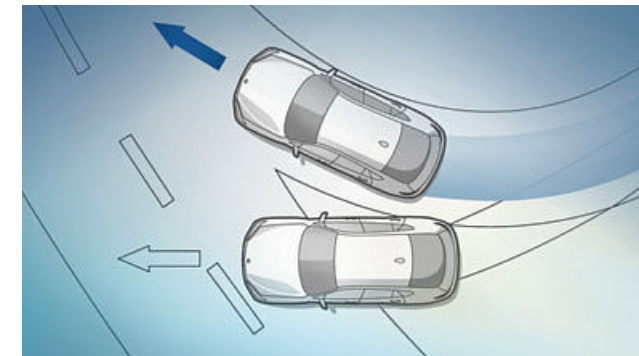
The optional **Dynamic Performance Control** optimises traction, directional stability and agility by distributing drive power to the outer rear wheel when driving through bends.

In conjunction with the optional M Sport package, the **Adaptive suspension** incorporates the air suspension on the rear axle. Its dynamic basic configuration can be changed using the Driving Experience Control with the SPORT and SPORT+ modes for an even sportier setting.

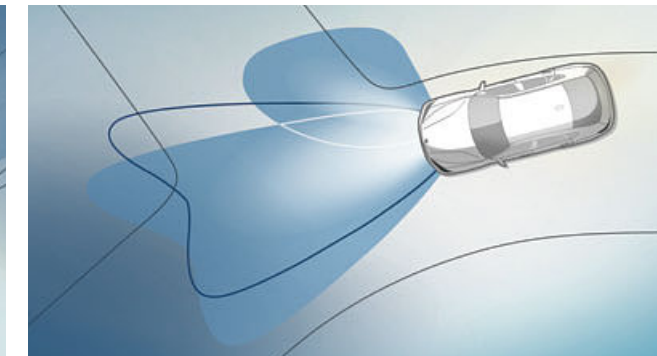
<sup>1</sup> Not available with the BMW X6 xDrive30d and BMW X6 xDrive40d.

## Safety.

Unparalleled safety with the latest BMW technology.



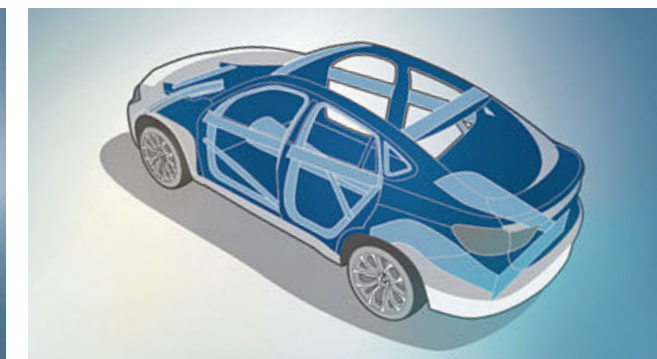
■ **The Dynamic Stability Control (DSC)** with extended functionality stabilises the vehicle as soon as any skidding motion is detected.



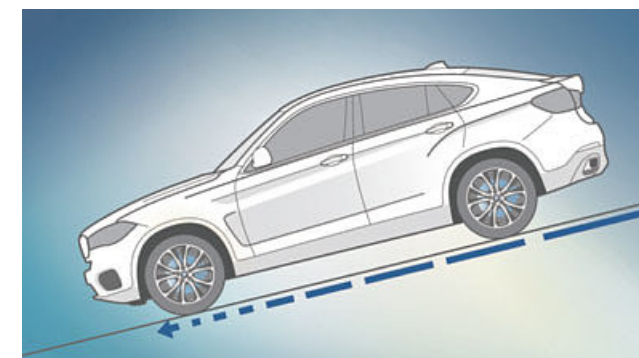
□ **Adaptive Headlights** with variable city and motorway light distribution incl. cornering lights for optimal illumination of the road ahead and BMW Selective Beam (anti-dazzle High-Beam Assistant).



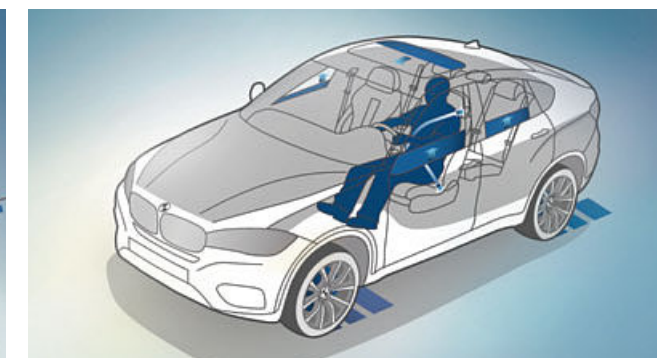
■ Sensors record the tyre pressure for each wheel. A **Tyre pressure indicator** warns the driver in good time if there is any pressure loss.



■ **Passenger cell** optimises passive safety in the event of a crash with its specialised system of beams and nodal connections as well as high-strength materials.



■ **Hill Descent Control (HDC)** is a system in the xDrive models, which, when activated, ensures that the vehicle can negotiate the steepest downhill runs automatically and safely at just above walking pace, without the driver having to brake.



□ **Active Protection** is a preventive passenger protection system developed by BMW. It triggers precautionary measures in potentially dangerous situations and brakes the vehicle after an accident has occurred.





# INDIVIDUALITY AND CHOICE.

**EQUIPMENT:** BMW Pure Extravagance design, M Sport package and BMW M Performance automobiles, BMW Individual, equipment highlights, wheels and tyres, Original BMW Accessories.

**COLOURS:** Exterior and interior colours.

**TECHNICAL DATA:** Vehicle weight, engine, transmission, driving performance, fuel consumption, wheels and technical drawings.

**BMW SERVICE:** BMW Service, BMW Financial Services and BMW Experience.





# BASIC.



**[ 01 | 03 ]** The BMW X6 xDrive30d with the optional exterior colour Atlas cedar and the optional 19" light alloy wheels Y-spoke style 595 9 J x 19 with 255/50 R 19 tyres.

**[ 02 ]** The standard navigation system Professional with touch display, the standard BMW Radio Professional and the standard stereo audio system with 6 speakers deliver entertainment on any journey.

**[ 04 ]** Standard Coral Red leather upholstery and optional sport seats highlight the dynamic interior.

**[ 05 ]** 19" light alloy wheels Y-spoke style 594, 9 J x 19 with 255/50 R 19 tyres (standard with BMW X6 xDrive35i, BMW X6 xDrive30d and BMW X6 xDrive40d).



# PURE EXTRAVAGANCE DESIGN.

■ Standard equipment □ Optional equipment

## Interior equipment features:

- door sill finishers in Aluminium on all doors, illuminated at front with „BMW“ designation
- seats in exclusive leather ‚Nappa‘ with extended features Ivory White/Black and contrast stitching in Grey, or exclusive leather ‚Nappa‘ with extended features Cognac/Black and contrast stitching in Brown
- car key with Pearl Chrome buttons and detailing
- interior trim finishers in fine-wood trim American Oak (with Ivory White/Black upholstery) or fine-wood trim Finition Stripe (with Cognac/Black upholstery)
- interior trim finishers in fine-wood trim structured Finition Pure, fine-wood trim Poplar Grain, Aluminium high finish or BMW Individual decorative trims
- upholstered instrument panel in leather ‚Walknappa‘ Black with contrast stitching Grey (with Ivory White/Black upholstery) or in leather ‚Walknappa‘ Black with contrast stitching Brown (with Cognac/Black upholstery)
- door panels in leather ‚Walknappa‘ Black with contrast stitching Grey (with Ivory White/Black upholstery) or in leather ‚Walknappa‘ Black with contrast stitching Brown (with Cognac/Black upholstery)

The Pure Extravagance interior design can be perfectly combined with the M Sport package and the BMW Individual Collection (see pages 361/37).

## Exterior equipment features:

- BMW kidney grille with exclusively designed slats in Cerium Grey and kidney grille frame in Cerium Grey
- front bumper with specific design elements in Cerium Grey and underbody protection design element in stainless steel
- LED fog lights
- 20" light alloy wheels V-spoke style 597 with mixed tyres, other wheels are available
- mirror caps in Cerium Grey, galvanised
- Air Breather with trim element in Cerium Grey
- side window frames and window recess finishers in Cerium Grey, B-pillar, mirror base and mirror foot in high-gloss Black
- rear underbody protection design element in stainless steel
- tailgate trim in Cerium Grey
- car key with Pearl-Gloss Chrome buttons and detailing

May be combined with Pure Extravagance interior design, Dakota leather and alternative wheels. Special recommendation for the Pure Extravagance design: roof rails in high-gloss Black.

03 □



**[ 01 ]** The exclusive leather upholstery radiates superior elegance in two-tone Cognac/Black with grey contrast stitching.



**[ 02 ]** Dynamics with an exclusive ambience – the driver-oriented interior and standard Sport leather steering wheel with integrated gearshift paddles ensure you'll always enjoy a sporty ride.



**[ 03 | 06 ]** The BMW X6 in optional Sophisto Grey Brilliant Effect metallic paint finish featuring optional 20" light alloy wheels Star-spoke style 491 with mixed tyres in high-gloss Black.

**[ 04 ]** The lower part of the instrument panel in Cognac and the Finition Stripe fine-wood interior trim complement the premium leather upholstery.

**[ 05 ]** The striking exterior mirror cap underlines the vehicle's design pedigree, adding an individual athletic touch.



**[ 07 ]** The brushed, anodised aluminium running boards in Cerium Grey add a distinctive touch to the look of the vehicle and make getting into the car easier.

**[ 08 ]** 20" light alloy wheels V-spoke style 597 with mixed tyres, front 10 J x 20 with 275/40 R 20 tyres, rear 11 J x 20 with 315/35 R 20 tyres.



## M SPORT PACKAGE.

01 04 

### M Sport package interior equipment:

- M door sill finishers, M driver footrest
- Sport seats for driver and front passenger in Alcantara/leather combination Anthracite with M logo on the piping, other upholsteries available
- M Leather steering wheel with multifunction buttons and with gearshift paddles
- BMW Individual headliner Anthracite
- BMW Individual headliner Alcantara
- Interior trim finishers in Aluminium Hexagon, other trims available
- Car key with exclusive M logo

### M Sport package exterior equipment:

- M Aerodynamics package with front apron, side skirts, wheel arch trim in body colour, rear apron with diffuser insert in Dark Shadow metallic
- 19" M light alloy wheels Star-spoke style 623 M with mixed tyres
- 20" M light alloy wheels Double-spoke style 469 M with mixed tyres
- 21" M light alloy wheels Double-spoke style 599 M with mixed tyres and run-flat, other wheels available
- Adaptive M suspension
- Adaptive suspension package 'Dynamic'
- BMW Individual high-gloss Shadow Line
- BMW Individual Exterior Line Aluminium satinised
- M logo on the sides
- Exterior mirror caps in body colour
- Tailpipe trim strip in Chrome high-gloss in M Sport package specific design
- Exclusive paintwork in Carbon Black metallic, other paintworks available
- Air Breather in Black high-gloss

[ 01 | 04 ] The BMW X6 with the optional exterior colour Flamenco Red brilliant effect and 21" light alloy wheels Double-spoke style 599 M silver with mixed tyres.

[ 02 ] M Leather steering wheel including multifunction buttons, steering wheel rim in leather, 'Walknappa' Black with contoured thumb rests.

[ 03 ] Elegant, electronically adjustable sports seats with memory function and Anthracite Alcantara/leather upholstery with M colours on the piping offer the driver and front passenger optimum lateral support.

[ 05 ] 20" M light alloy wheels Double-spoke style 469 M with mixed tyres, front 10 J x 20 with 275/40 R20 tyres, rear 11 J x 20 with 315/35 R20 tyres.

## M SPORT EDITION.

■ Standard equipment  Optional equipment

05 ■



09 ■



### M Sport Edition interior equipment features:

- M door sill finishers, M driver footrest
- Sport seats for driver and front passenger in Alcantara/leather combination Anthracite with M designation on the piping, other upholsteries available
- M Leather steering wheel with multifunction buttons and with gearshift paddles
- BMW Individual headliner anthracite, alternatively BMW Individual headliner Alcantara
- Interior trim finishers Aluminium Hexagon, alternatively Interior trim finishers 'Carbon Fibre', other trims available
- Car key with exclusive M designation

[ 05 | 09 ] The BMW X6 with the optional exterior colour Mineral White and 20" M light alloy wheels Double-spoke style 468 M with mixed tyres.

[ 06 ] 20" M light alloy wheels Double-spoke style 469 M Jet Black with mixed tyres, front size 10J x 20 with 275/40 R20 tyres, rear 11J x 20 with 315/35 R20 tyres.

[ 07 ] Exclusive leather Nappa, extended, NAEN Bicolor Ivory White/Black, interior colour Black

### M Sport Edition exterior equipment features:

- M Aerodynamics package with front apron, side skirts, wheel arch trim in body colour, rear apron with diffuser insert in Dark Shadow metallic
- LED fog lights
- 20" M light alloy wheels Double-spoke style 468 M with mixed tyres, alternatively 21" M light alloy wheels Double-spoke style 599 M with mixed tyres and run-flat properties; other wheels available
- Adaptive M suspension or Adaptive suspension package 'Dynamic'
- BMW Individual high-gloss Shadow Line, alternatively BMW Individual Exterior Line Aluminium satinised
- M designation on the sides
- Exterior mirror caps in body colour
- Tailpipe trim strip in Chrome high-gloss in M Sport package specific design
- Exclusive paintwork in Carbon Black, alternatively Long Beach Blue metallic; other paintworks available
- Air Breather in Black high-gloss

[ 08 ] Interior trim finishers 'Carbon Fibre' with highlight trim finisher Pearl Chrome on the instrument panel and all four doors – for a touch of racing flair.

[ 10 ] 20" M light alloy wheels Double-spoke style 468 M with mixed tyres, front 10J x 20 with 275/40 R20 tyres, rear 11J x 20 with 315/35 R20 tyres.

powered by 

powered by 





**Lettering.** The car features a distinctive M50d model designation in Chrome dark.

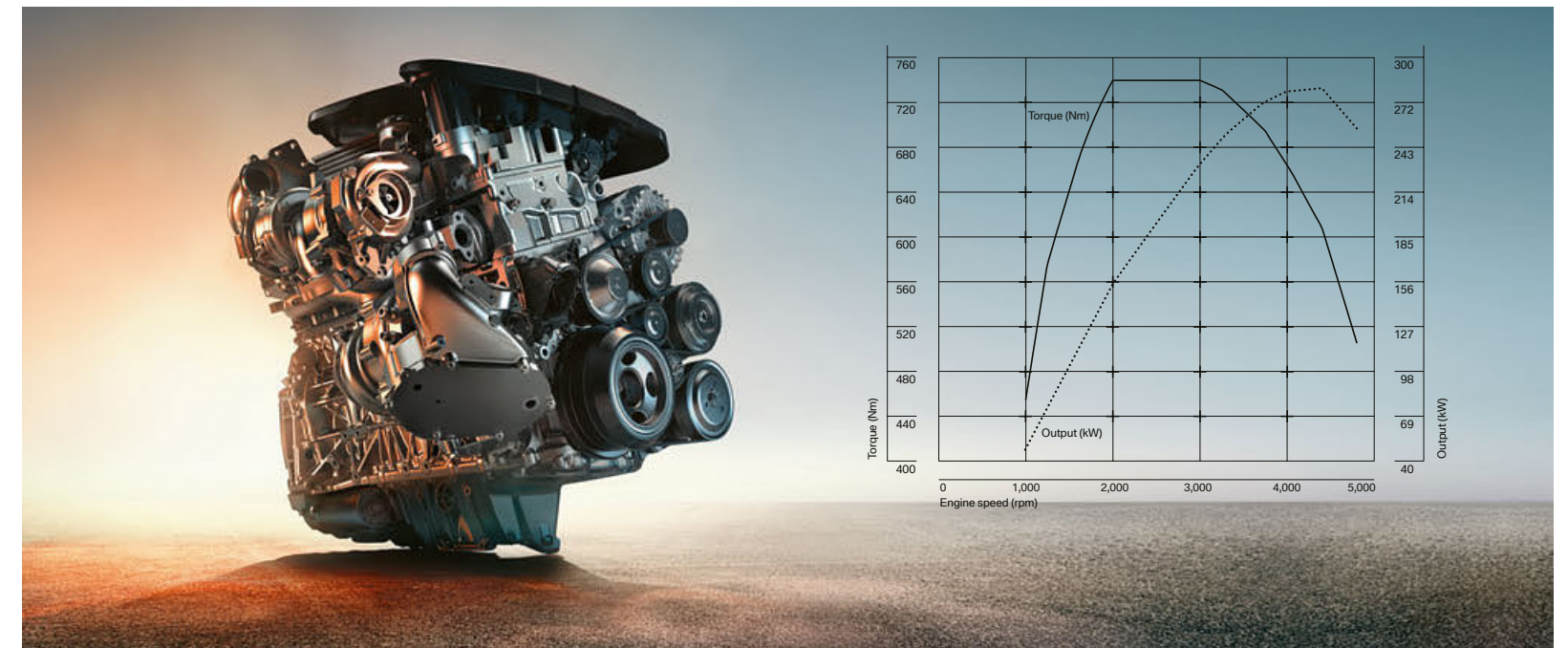


**Interior.** M leather steering wheel and instrument cluster with "X6 M50d" designation are standard.



## THE BMW X6 M50d. M GENE INCLUDED.

**BMW X6 M50d.** The BMW X6 M50d combines an innovative drive, perfectly matched suspension technology and an extraordinary design to create a car that inspires through pure dynamics, comfort and practicality: The M Performance TwinPower Turbo inline 6-cylinder diesel engine with three-stage turbocharging and common rail direct injection combines impressive performance with lightning-fast response and sustained thrust. The 280 kW (381 hp) engine of the BMW X6 M50d accelerates from 0 to 100 km/h in just 5.2 seconds, with an efficient combined fuel consumption of 7.8–7.9 litres per 100 km and CO<sub>2</sub> emissions of 205–209 g/km. At the same time, the Adaptive M suspension ensures that the BMW X6 M50d is even more focused on sportiness – for a vehicle with particularly precise handling characteristics and maximum agility



The data for fuel consumption, CO<sub>2</sub> emissions and energy consumption are determined in accordance with the measurements processes as defined by European Regulation (EU) 2007/715 in the applicable version. Data refer to a vehicle with base-level equipment in Germany, and the ranges account for differences according to the selected wheel and tyre size and the optional equipment and may change during the configuration process. Figures have been determined on the basis of the new WLTP test cycle and have been converted back into NEDC figures for comparability.





# BMW Individual

The expression of personality.



BMW Individual paint finish Pyrite Brown metallic and 20" light alloy wheels V-spoke style 551 I.



## The BMW X6. Inspired by BMW Individual.

Driving a BMW is, in itself, a mark of character. There are those who still, however, want their vehicles to be even more individual reflections of their personality. The BMW Individual Collection and the BMW Individual Manufaktur meet these needs by opening up seemingly limitless opportunities for differentiation.

Precisely in tune with each model, the BMW Individual Collection offers a highly exclusive selection of equipment options. Fascinating paint finishes either refracting the light or with a matt effect. Leather, unique in colour and scope of application, perfected with clever contrasts and decorative stitching. Interior trims in the most exclusive fine woods, the immaculate Piano finish and the finest leather.

And yet even this can be surpassed – thanks to the BMW Individual Manufaktur. Here, there is only one goal: realising almost any customer request, even the most personal, with stylish, hand-crafted perfection.



BMW Individual extended fine-grain Merino leather in Taupe with decorative perforation along with piping and stitching in a contrasting colour.



BMW Individual extended fine-grain Merino leather in Taupe with instrument panel finished in leather, fine-wood trim Sen Light Brown and leather steering wheel with wood inlay.

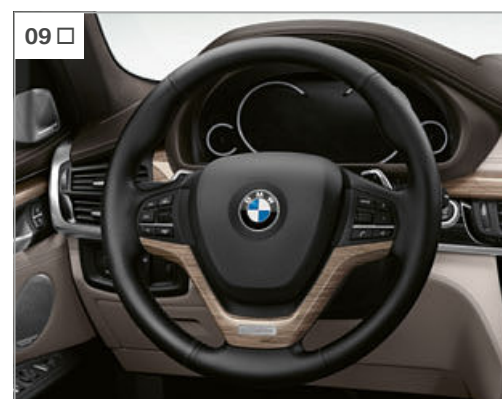
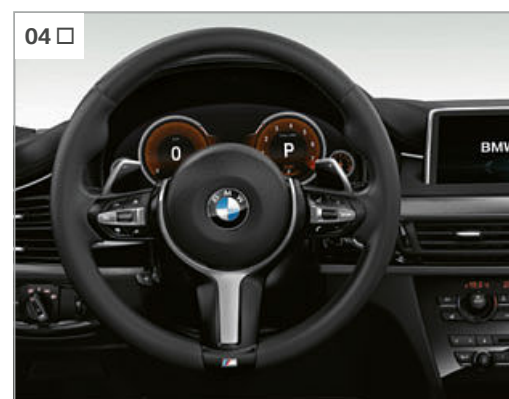


EXPERIENCE BMW INDIVIDUAL INTERACTIVE.  
WITH THE BMW INDIVIDUAL APP FOR iOS AND ANDROID.



## EQUIPMENT HIGHLIGHTS.

■ Standard equipment □ Optional equipment



**[ 01 ]** The electronic glass roof allows the airflow to be regulated, creating a pleasant in-car climate. The integrated wind deflector guarantees a high level of acoustic comfort.

**[ 02 ]** The trailer tow hitch with electronically adjustable tow ball (not visible) and stability control is capable of pulling heavy loads of up to 3.500 kg.

**[ 03 ]** The brushed, anodised aluminium running board adds a distinctive look to the vehicle and makes it much easier to get into the car (shown here in Cerium Grey).

**[ 04 ]** M Leather steering wheel including multifunction buttons, steering wheel rim in leather 'Walknappa' Black with contoured thumb rests.

**[ 05 ]** The Adaptive LED headlights produce a light colour very similar to daylight and adjust their light distribution automatically according to speed and steering angle.

**[ 06 ]** The soft-close function pulls the door shut gently and electromechanically.

**[ 07 ]** The Sport leather steering wheel with integrated gearshift paddles allows the driver to steer the vehicle, change gears and operate other functions while keeping both hands on the wheel.

**[ 08 ]** Special recommendation for the Pure Extravagance design: roof rails in high-gloss Black.

**[ 09 ]** BMW Individual leather steering wheel in the Sport leather steering wheel design with wood inlay – complements each BMW Individual interior trim.

**[ 10 ]** BMW Individual leather-covered instrument panel (XT1), upper section in Walknappa leather<sup>1</sup> and lower section in fine-grain Merino leather in the upholstery colour.<sup>2</sup>

**[ 11 ]** The Driving Assistant Plus<sup>3</sup> safety equipment draws the driver's attention to an unintentional lane change or possible collision and brakes automatically in the event of an emergency.

**[ 12 ]** The Multifunctional Instrument Display provides an impressive visualisation of the gauges and other instruments.

**[ 13 ]** The full-colour BMW Head-Up Display projects information relevant to the journey directly into the driver's field of vision.<sup>4</sup>

**[ 14 ]** The Driving Experience Control features various different modes, so the driver can choose between a comfortable, particularly efficient or superbly sporty drive.

**[ 15 ]** The iDrive Touch Controller (part of Navigation System Professional): intuitive control via the iDrive Controller touchpad.

**[ 16 ]** There are two cupholders in the centre console at the front, and another two in the centre armrest at the rear, as well as bottle holders in all the doors.

**[ 17 ]** Exclusive ceramic surrounds for controls, such as the gear lever and temperature and volume dials, lend a particularly high-quality look.

**[ 18 ]** The Bang & Olufsen High End Surround Sound system enthral listeners with its full sound, lighting settings and extendable centre speaker.

**[ 19 ]** Automatic air conditioning with 4-zone control comes with an additional display-based control unit for individual temperature control in the rear.

<sup>1</sup> Black with Amaro Brown, Nutmeg or Criollo Brown upholstery. In Scotch dark with Smoke White or Taupe upholstery.

<sup>2</sup> The upper and lower parts of the instrument panel and the door panels feature contrast stitching. Only available in conjunction with BMW Individual fine-grain Merino leather.

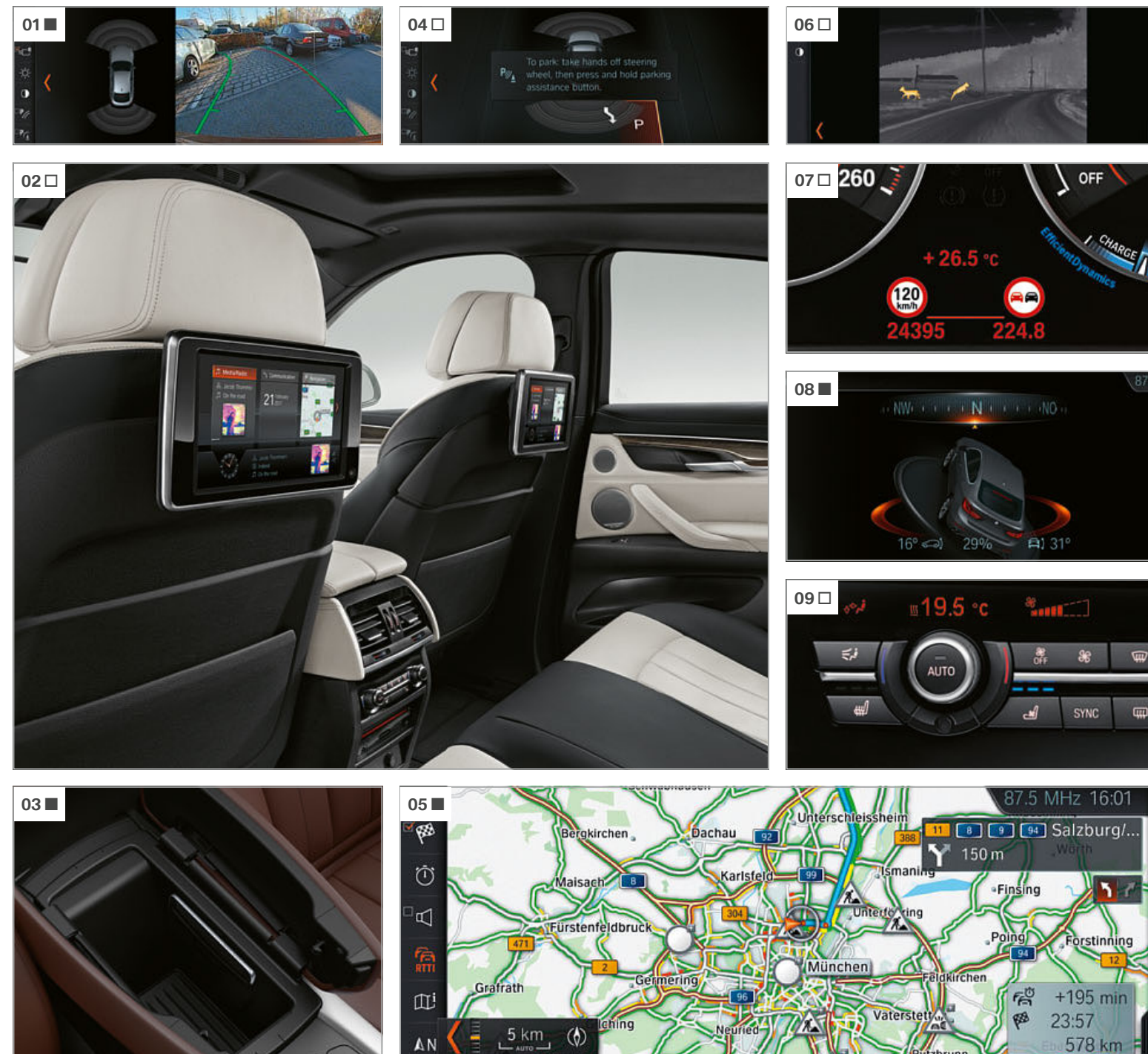
<sup>3</sup> The functionality of this system may be limited by darkness and fog.

<sup>4</sup> The full-colour BMW Head-Up display is not fully visible if you're wearing polarised sunglasses. The content shown will depend on the equipment options chosen.



# EQUIPMENT HIGHLIGHTS.

■ Standard equipment □ Optional equipment



**[ 01 ]** The Rear view camera shows the area behind the vehicle on the Control Display. Interactive track lines and obstacle markings also help the driver when reversing.

**[ 02 ]** Rear-seat entertainment Professional provides excellent entertainment for rear passengers thanks to two separate colour displays.

**[ 03 ]** Telephony with wireless charging offers a comprehensive telephony package with Bluetooth connectivity, an NFC interface and the technical capacity for a WiFi hotspot.<sup>1,2</sup>

**[ 04 ]** The latest generation Parking Assistant provides the driver with maximum support – by taking charge of selecting the correct gear, as well as steering, acceleration and braking.

**[ 05 ]** Real Time Traffic Information almost instantly delivers traffic information about motorways, country roads and main roads, as well as numerous urban routes.<sup>2</sup>

**[ 06 ]** BMW Night Vision with Dynamic Light Spots makes it easy to identify people and large animals at night – even at a significant distance.

**[ 07 ]** Speed Limit Info including the No-overtaking indicator displays speed limits and provides information on no-overtaking zones.

**[ 08 ]** When driving off-road, xDrive Status offers an overview of information such as the cross slope and angle of incline, as well as a compass.

**[ 09 ]** In warm weather, the active seat ventilation in the front ensures provides a cool and pleasant seat temperature, for a more comfortable driving experience.

**[ 10 ]** With Comfort access, the key only has to be in the vehicle's direct proximity – all doors, incl. the tailgate, are locked and unlocked by remote sensors.<sup>3</sup>

**[ 11 ]** The electric seat<sup>4</sup> adjustment memory function allows users to save personalised settings for the seat, steering wheel and exterior mirrors.

**[ 12 ]** The sport seats<sup>5</sup> for the driver and front passenger provide optimal support, along with numerous electrical adjustment options.

**[ 13 ]** The storage package includes a number of clever solutions that allow large and small objects, as well as items of luggage, to be secured and stowed.

**[ 14 ]** The 4 + 1 seating concept, which includes two visually contoured individual rear seats, lends the car a dynamic coupé-style character and has room for five passengers.

**[ 15 ]** With the Pro ski and snowboard bag, there is still room in the rear for up to two passengers.

**[ 16 ]** Knee pads on the centre console for both the driver and front passenger provide comfortable lateral support for legs – especially when taking bends at speed.

**[ 17 ]** With its wide variety of LED lights and adjustable lighting colours, the lighting package increases comfort both inside and outside the vehicle.

<sup>1</sup> Qi-compatible mobile phones can be charged inductively via the side smartphone holder in the centre console. Special charging cases for selected smartphones that do not support Qi inductive charging are available from BMW Parts and Accessories. The internet connection for the SIM card with 4G/LTE mobile communication incurs costs that are calculated separately by the mobile communication provider.

<sup>2</sup> Component of Navigation package ConnectedDrive.

<sup>3</sup> In conjunction with the trailer tow hitch and the Pure Extravagance exterior design, the partial function Contactless opening and closing of the tailgate is not available.

<sup>4</sup> Standard with the BMW X6 xDrive50i and BMW X6 xDrive40d.

<sup>5</sup> Standard for X5 M50d.



## WHEELS AND TYRES.

■ Standard equipment □ Optional equipment ○ Accessories



**[ 01 ]** 19" light alloy wheels Y-spoke style 594, 9 J x 19 with 255/50 R 19 tyres (standard with BMW X6 xDrive35i, BMW X6 xDrive30d and BMW X6 xDrive40d).

**[ 02 ]** 19" light alloy wheels Y-spoke style 595, 9 J x 19 with 255/50 R 19 tyres (standard with BMW X6 xDrive50i).

**[ 03 ]** 20" light alloy wheels Y-spoke style 451 with mixed tyres, front 10 J x 20 with 275/40 R 20 tyres, rear 11 J x 20 with 315/35 R 20 tyres.

**[ 04 ]** 20" light alloy wheels Star-spoke style 491 with mixed tyres, high-gloss Black, front 10 J x 20 with 275/40 R 20 tyres, rear 11 J x 20 with 315/35 R 20 tyres.

**[ 05 ]** 19" light alloy wheels Star-spoke style 490, BMW EfficientDynamics, 9 J x 19 with 255/50 R 19 tyres.

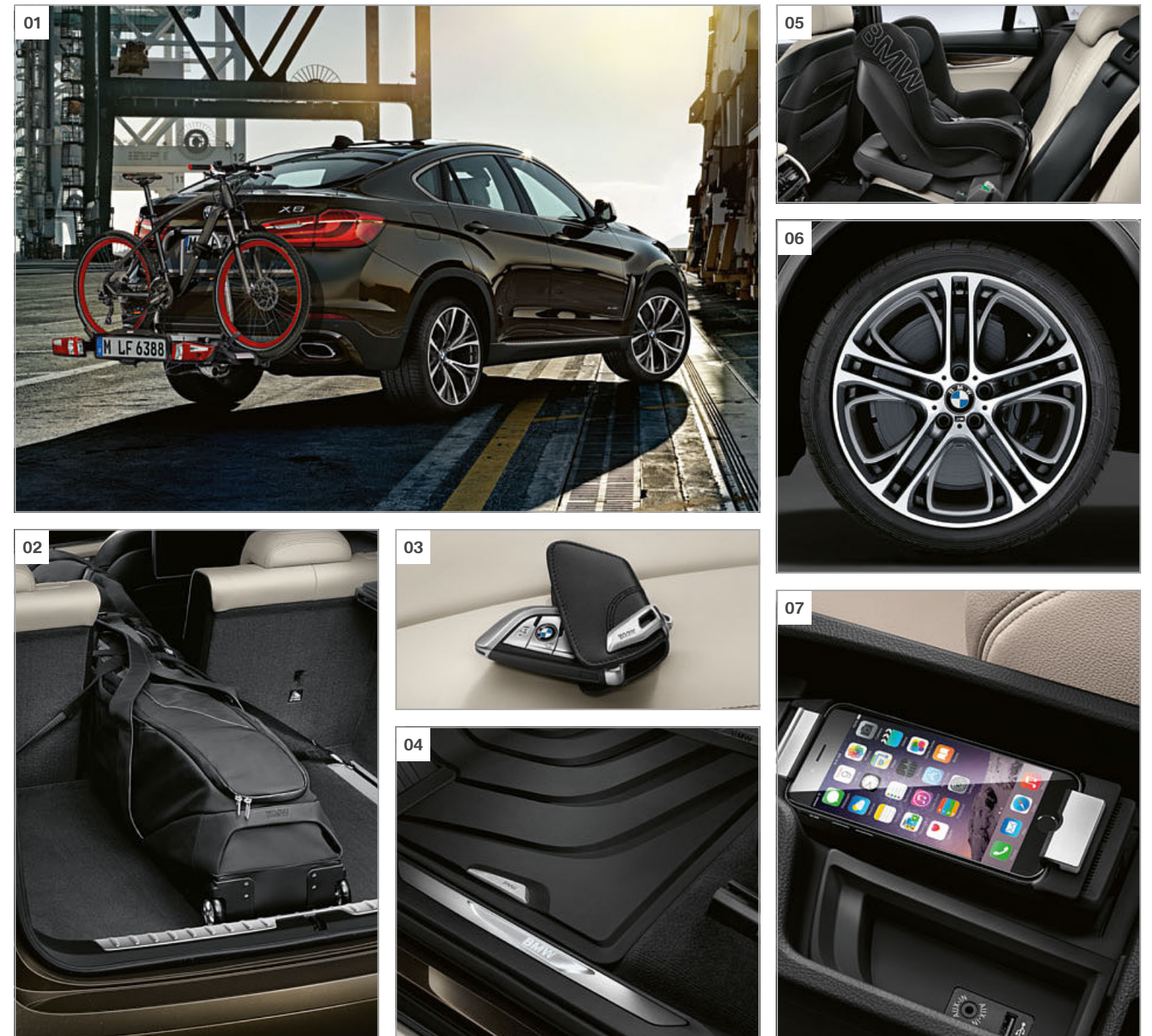
**[ 06 ]** 20" BMW Individual light alloy wheels V-spoke style 551 with mixed tyres, front 10 J x 20 with 275/40 R 20 tyres, rear 11 J x 20 with 315/35 R 20 tyres.

**[ 07 ]** 21" M light alloy wheels Double-spoke style 599 M in bicolour Orbit Grey matt, gloss-lathed on the visible side, with mixed tyres and runflat properties, front 10 J x 21 with 285/35 R 21 tyres, rear 11.5 J x 21 with 325/30 R 21 tyres.<sup>1</sup>

**[ 08 ]** 21" BMW Performance Y-spoke style 375 bi-colour Ferricgrey, gloss-lathed, BMW Performance designation, with mixed tyres, front 10 J x 21 with 285/35 R 21 tyres, rear 11.5 J x 21 with 325/30 R 21 tyres.<sup>1</sup>

**[ 09 ]** 19" M light alloy wheels Double-spoke style 623 M with mixed tyres, front 9 J x 19 with 255/50 R 19 front tyres, 285/45 R 19 rear tyres.<sup>2</sup>

## ORIGINAL BMW ACCESSORIES.



**[ 01 ]** Bicycle holder for transporting up to two bikes (max. 60kg). Securely mounts to the trailer tow hitch. Tilting function for easy access to the luggage compartment.

**[ 02 ]** Luxury ski and snowboard bag for safe transport of up to four pairs of skis or three snowboards within the vehicle. Thanks to the wheels and use of real leather, the bag is both convenient and elegant.

Discover the all-round innovative solutions on offer in many categories: exterior, interior, communication & information and transport & luggage compartment. Your BMW partner will be happy to advise you and provide you with a special catalogue detailing the entire range of Original BMW Accessories. For further information, please visit [www.bmw.com/accessories](http://www.bmw.com/accessories)

**[ 03 ]** The premium quality black leather case with a stylish stainless steel clasp prevents the buttons from being accidentally pressed and protects the key against scratches and dirt.

**[ 04 ]** The perfectly fitted, durable mat with a raised border and stainless steel metal inlay protects the footwell and feet from moisture and dirt.

**[ 05 ]** BMW junior seat, group 1. Seat, Black/Anthracite, for children from approx. 12 months to 4 years old (approx. 9–18kg), for mounting on the ISOFIX base (to be ordered separately). Includes air pads for more side impact protection.

**[ 06 ]** 21" BMW Performance Double-spoke style 310 M bi-colour Ferricgrey, gloss-lathed, M logo, with mixed tyres, front 10 J x 21 with 285/35 R 21 tyres, rear 11.5 J x 21 with 325/30 R 21 tyres.

**[ 07 ]** Connect Universal snap-in adapter. An adapter for all compatible telephones with a micro USB port. In addition to charging, it improves reception and allows for safe storage.

<sup>1</sup> These and many more wheels are available as original BMW Accessories from [www.bmw.com/accessories](http://www.bmw.com/accessories)

<sup>2</sup> Standard with the M Sport package and M50d.

<sup>3</sup> Optionally available for M Sport package and M Sport Edition.

Optional and standard equipment vary according to country.



# EXTERIOR COLOURS.

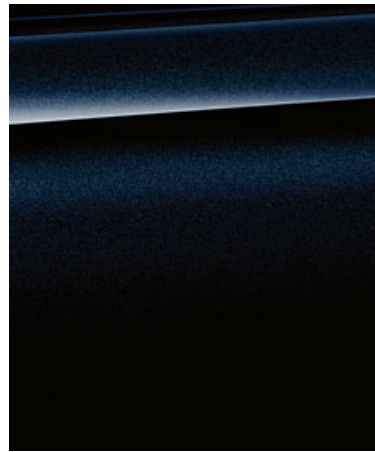
■ Standard equipment □ Optional equipment



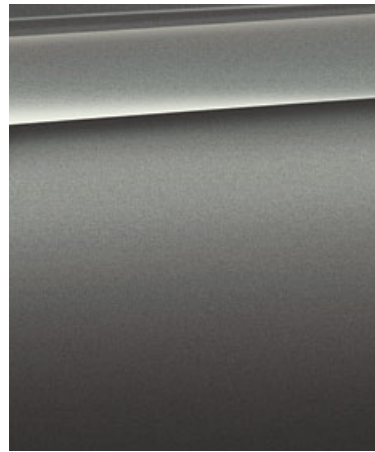
■ Non-metallic 668 Black



□ Non-metallic 300 Alpine White<sup>1</sup>



□ Metallic 416 Carbon Black<sup>2,3,4</sup>



□ Metallic A52 Space Grey<sup>3</sup>



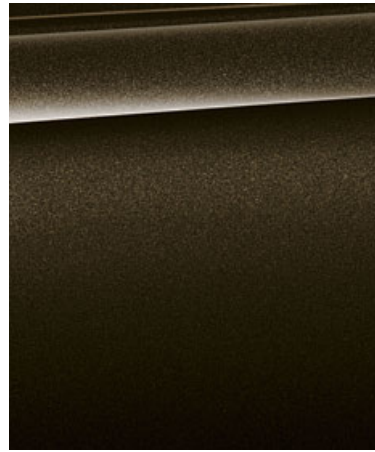
□ Metallic 475 Black Sapphire<sup>3</sup>



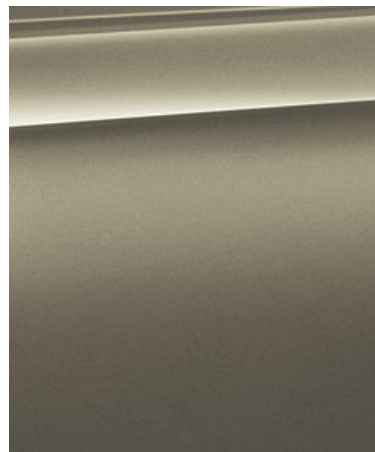
□ Metallic A83 Glacier Silver



□ Metallic C06 Flamenco Red Brilliant Effect<sup>3</sup>



□ Metallic C07 Sparkling Storm Brilliant Effect



□ Metallic C2P Atlas Ceder



□ Metallic A96 Mineral White<sup>3,4</sup>



□ Metallic A90 Sophisto Grey Brilliant Effect

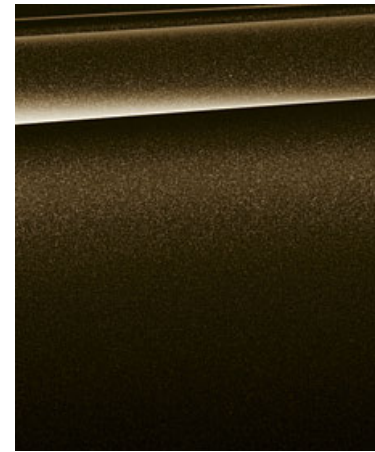


□ Metallic C16 Long Beach Blue<sup>4</sup>

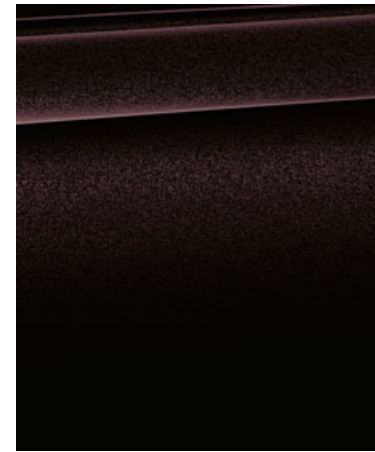
## BMW INDIVIDUAL



□ BMW Individual X01 Pearl Silver metallic<sup>3</sup>



□ BMW Individual X13 Pyrite Brown metallic<sup>3</sup>



□ BMW Individual X03 Ruby Black metallic<sup>3</sup>



□ BMW Individual S34 Azurite Black metallic<sup>3</sup>

<sup>1</sup> Standard with the M Sport package.  
<sup>2</sup> Only available in conjunction with the M Sport package.  
<sup>3</sup> Also optionally available with the M Sport package.  
<sup>4</sup> Optionally available for M Sport Edition.

Optional and standard equipment vary according to country.

**[ Colour samples ]** These colour samples are intended as an initial guide to the colours and materials available for your BMW. However, experience has shown that printed versions of paint, upholstery and interior trim colours cannot in all cases faithfully reproduce the appearance of the original colour. Please discuss your preferred colour choices with your BMW partner or dealership. There you can also see original samples and be assisted with special requests.



# INTERIOR COLOURS.

■ Standard equipment □ Optional equipment

## UPHOLSTERY COLOURS



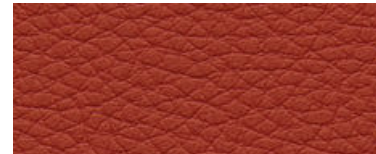
■ **Dakota leather** LCSW Black, interior colour Black<sup>1</sup>



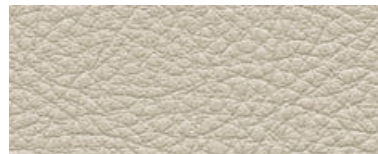
■ **Dakota leather** LCCY Canberra Beige, interior colour Canberra Beige<sup>1</sup>



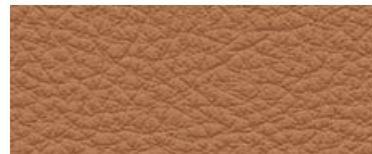
■ **Dakota leather** LCBB Terra, interior colour Black<sup>1</sup>



■ **Dakota leather** LCD1 Coral Red, interior colour Black<sup>2</sup>



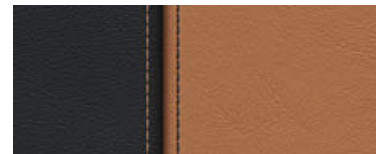
■ **Dakota leather** LCEW Ivory White, interior colour Black<sup>3</sup>



■ **Dakota leather** LCRI Cognac, interior colour Black<sup>3</sup>



□ **Exclusive Nappa leather**, extended, NAEN bi-colour Ivory White/Black, interior colour Black<sup>1,4</sup>

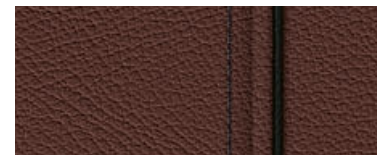


□ **Exclusive Nappa leather**, extended, NARQ bi-colour Cognac/Black, interior colour Black<sup>1,4</sup>



□ **Alcantara/leather combination** GMAT Anthracite, interior colour Black<sup>2,3,5,6</sup>

## BMW INDIVIDUAL UPHOLSTERY COLOURS



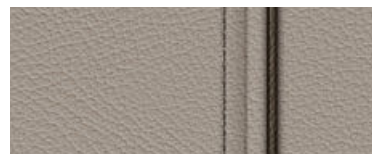
□ **BMW Individual fine-grain Merino leather** ZAP3 Criollo Brown<sup>2,7,8</sup>



□ **BMW Individual fine-grain Merino leather** ZAP5 Amaro Brown<sup>2,7,8</sup>



□ **BMW Individual fine-grain Merino leather** ZAFU Smoke White<sup>2,7,8</sup>



□ **BMW Individual fine-grain Merino leather** ZAN3 Taupe<sup>2,7,8</sup>



□ **BMW Individual fine-grain Merino leather** ZAML Nutmeg<sup>2,7,8</sup>

Please note that even normal long or short-term use can lead to unrecoverable upholstery damage. This can be caused in particular by non-colourfast clothing.

<sup>2</sup> Not available in conjunction with standard seats.

<sup>3</sup> Not available in conjunction with comfort seats.

<sup>4</sup> Exclusively available with the interior design Pure Extravagance in combination with comfort seats.

<sup>5</sup> Only available in conjunction with the M Sport package.

<sup>6</sup> Standard with the BMW X6 M50d.

<sup>7</sup> Only available in conjunction with the BMW Individual leather-covered instrument panel (XT1).

<sup>1</sup> In conjunction with the optional active seat ventilation, front, the Dakota leather comes with perforated surfaces on the front seats, while the exclusive Nappa leather and BMW Individual extended fine-grain Merino leather trim come with perforated surfaces on the front and rear seats

## INTERIOR TRIMS



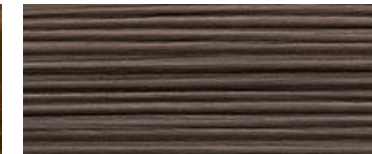
■ **4DY Oxide Silver dark matt**<sup>11</sup>



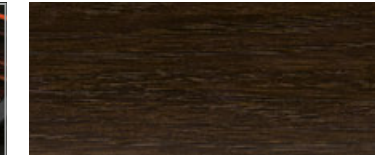
□ **4B9 Fine Brushed Aluminium**



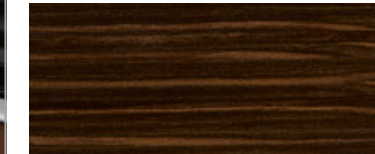
□ **4AC Poplar Grain fine-wood trim**<sup>12</sup>



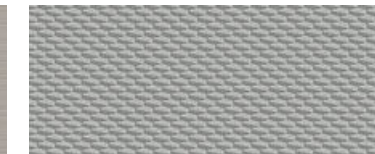
□ **4DD FINELINE Pure fine-wood trim, textured, dark**



□ **4CV American Oak fine-wood trim in high-gloss Anthracite**<sup>9</sup>



□ **4D0 FINELINE Stripe fine-wood trim**<sup>10</sup>

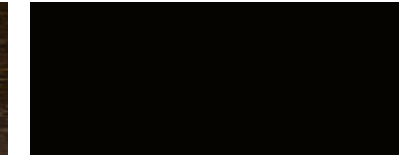


□ **4MR Aluminium Hexagon**<sup>5,6</sup>



□ **4MC Carbon Fibre, highlight trim finisher Pearl Chrome**<sup>16</sup>

## BMW INDIVIDUAL INTERIOR TRIMS



□ **BMW Individual interior trim** XE7 Piano finish Black

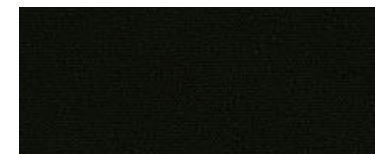


□ **BMW Individual interior trim** XEW Fine-wood trim Sen Light Brown

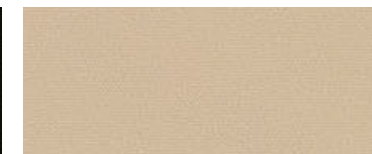


□ **BMW Individual interior trim** 4WC Fine-wood trim Ash Vulcano Brown

## INTERIOR COLOURS

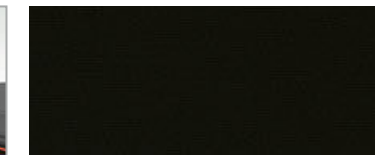


Black



Canberra Beige

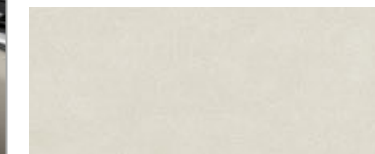
## BMW INDIVIDUAL HEADLINER



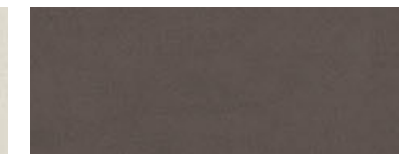
□ **BMW Individual headliner** 775 Anthracite<sup>6,13</sup>



□ **BMW Individual headliner** 776 Alcantara Anthracite



□ **BMW Individual headliner** XD5 Alcantara Smoke White<sup>14</sup>



□ **BMW Individual headliner** XD5 Alcantara Scotch dark<sup>15</sup>

<sup>8</sup> BMW Individual extended fine-grain Merino leather trim includes the front and rear seats, incl. headrests, rear panels on the front seat backrests, door panel inserts and centre console, incl. armrest, armrests in the doors and the door handles. Seats with contrast piping, contrast stitching and decorative perforation (decorative perforation not available in conjunction with the optional active seat ventilation, front).

<sup>9</sup> Standard with the interior design Pure Extravagance Ivory White/Black.

<sup>10</sup> Standard with the interior design Pure Extravagance Cognac/Black.

<sup>11</sup> Standard with the BMW X6 xDrive35i and BMW X6 xDrive30d.

<sup>12</sup> Standard for BMW X6 xDrive50i.

<sup>13</sup> Standard with the M Sport package.

<sup>14</sup> Only available in conjunction with BMW Individual fine-grain Merino leather in Amaro Brown, Criollo Brown or Smoke White.

<sup>15</sup> Only available in conjunction with BMW Individual fine-grain Merino leather in Taupe or Nutmeg.

<sup>16</sup> Exclusively available for M Sport Edition.

Optional and standard equipment vary according to country.



		X6 xDrive35i <sup>1</sup>	X6 xDrive50i <sup>1</sup>	X6 xDrive30d* <sup>1</sup>	X6 xDrive40d* <sup>1</sup>	X6 M50d* M PERFORMANCE
--	--	---------------------------	---------------------------	----------------------------	----------------------------	---------------------------

**Weight**

Curb weight EG <sup>1</sup>	kg	2100	2245	2140	2180	2260
Maximum permissible weight	kg	2740	2885	2780	2820	2900
Load capacity	kg	715	715	715	715	715
Maximum permissible tow load, unbraked	kg	750	750	750	750	750
Maximum permissible towing capacity, braked, max. 12 % gradient <sup>2</sup> / 8 % gradient <sup>2</sup>	kg	3500/3500	3500/3500	3500/3500	3500/3500	3500/3500
Luggage compartment volume min.-max.	l	550–1525	550–1525	550–1525	550–1525	550–1525

**Engine<sup>3,4</sup>**

Cylinders/valves		6/4	8/4	6/4	6/4	6/4
Capacity	cc	2979	4395	2993	2993	2993
Max. output/engine speed	kW (hp)/ rpm	225 (306)/ 5800–6400	330 (450)/ 5500–6000	190 (258)/ 4000	230 (313)/ 4400	280 (381)/ 4000–4400
Max. torque/engine speed	Nm/rpm	400/ 1200–5000	650/ 2000–4500	560/ 1500–3000	630/ 1500–2500	740/ 2000–3000

**Power transmission**

Drivetrain		All-wheel	All-wheel	All-wheel	All-wheel	All-wheel
Standard transmission		8-speed Steptronic	8-speed Steptronic	8-speed Steptronic	8-speed Steptronic	8-speed Steptronic

**Driving performance**

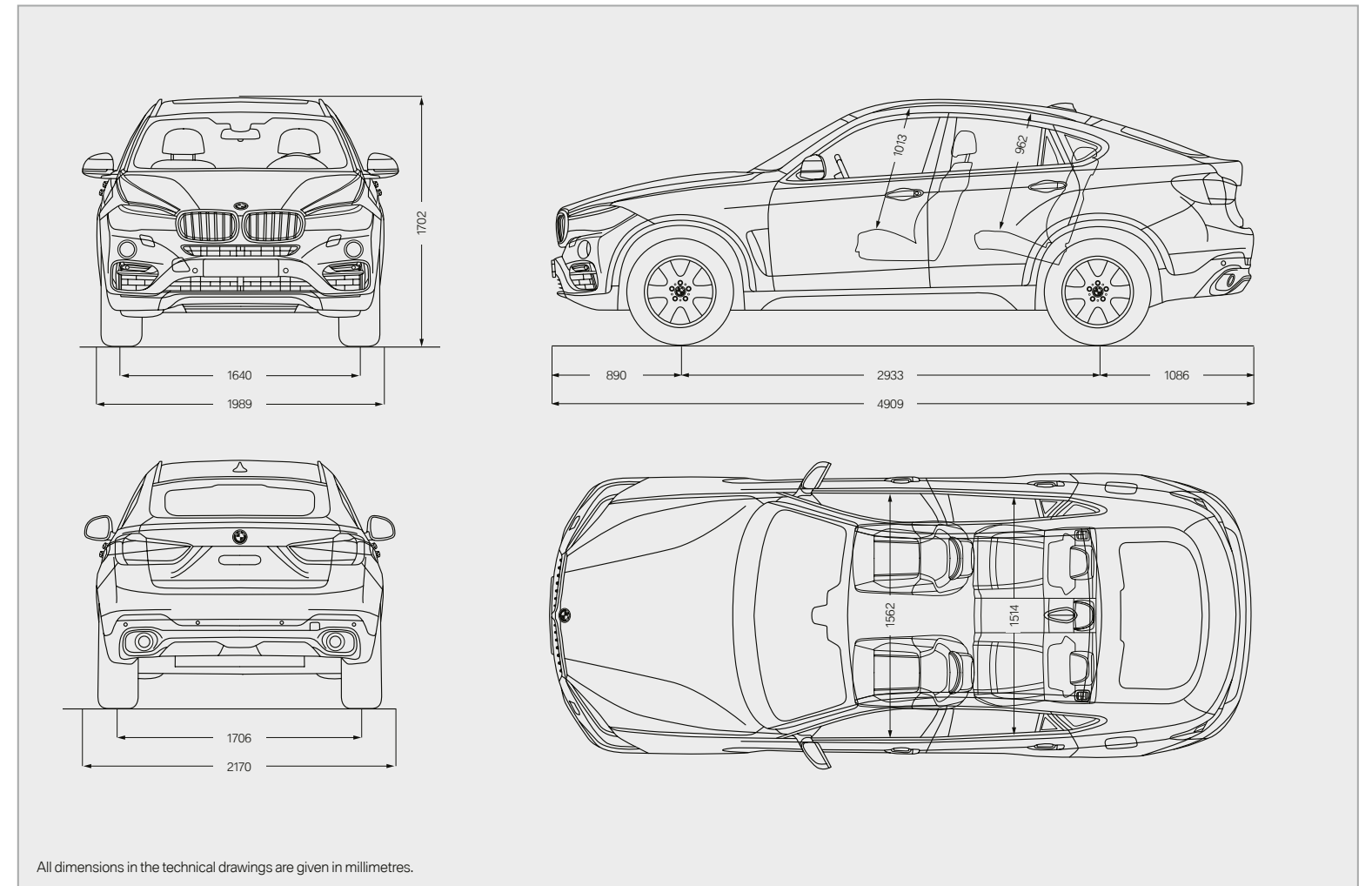
Maximum speed	km/h	240	250 <sup>5</sup>	230	240	250 <sup>5</sup>
Acceleration 0–100km/h	s	6.4	4.8	6.7	5.8	5.2

**Consumption<sup>3,4</sup>**

Urban	l/100km	11.3–11.4	13.0–13.1	8.4–11.3	7.9–8.3	8.7–9.1
Extra-urban	l/100km	6.9–7.0	7.7–7.8	4.4–6.2	6.4	7.3
Combined	l/100km	8.5–8.6	9.7	7.0–7.1	7.0–7.1	7.8–7.9
Exhaust emissions standard (type-certified)		EU6	EU6	EU6	EU6	EU6
Combined CO <sub>2</sub> emissions	g/km	198–200	225–227	183–187	183–187	205–209
Fuel tank capacity, approx	l	85	85	85	85	85

**Wheels**

Tyre size		255/50 R 19 W	255/50 R 19 W	255/50 R 19 W	255/50 R 19 W	255/50/285/45 R 19 W
Wheel size		9 J x 19	9 J x 19	9 J x 19	9 J x 19	9/10 J x 19
Material		Light alloy	Light alloy	Light alloy	Light alloy	Light alloy



<sup>1</sup> The EC unladen weight refers to a vehicle with standard equipment and does not include any optional extras. The unladen weight includes a 90% full tank and a driver weight of 75 kg. Optional equipment may affect the weight of the vehicle, the payload and the top speed if the selected equipment has an impact on the vehicle's aerodynamics.

<sup>2</sup> Only with factory-fitted trailer tow hitch, otherwise max. trailer load 2,700 kg / 140 kg tow bar download.

<sup>3</sup> Performance data of petrol engines apply to vehicles using RON 98 fuel. Fuel consumption data apply to vehicles using reference fuels in accordance with EU Regulation 2007/715. Unleaded RON 91 and higher with a maximum ethanol content of 10% (E10) may also be used. BMW recommends RON 95 super unleaded petrol.

<sup>4</sup> The data for fuel consumption, CO<sub>2</sub> emissions and energy consumption are determined in accordance with the measurement processes as defined by European Regulation (EC) 715/2007 in the applicable version. Data refer to a vehicle with base-level equipment in Germany, and the ranges account for differences according to the selected wheel and tyre size and the optional equipment and may change during the configuration process. Data for vehicles indicated with \* have already been determined on the basis of the new WLTP test cycle and adjusted for comparability with NEDC.

<sup>5</sup> Electronically limited.

<sup>6</sup> Models/engines for which these values apply can be ordered until 04/15/2018. Please ask your BMW Partner for more detailed information about the availability.



## WELL TAKEN CARE OF WITH BMW SERVICES:

When you buy a BMW, you can look forward to superb service and comprehensive customer care. For example, the **Condition Based Service** independently tracks both service fluid levels and the condition of parts subject to wear and then notifies you in the display when the vehicle requires servicing. So you only need to go to your BMW service partner when it's really necessary. When you do go, our

**qualified BMW service specialists** take care of your vehicle using the newest workshop technology and only **original BMW parts**. This service is available worldwide in more than 3,300 BMW service partner establishments in over 150 countries, to provide you with limitless driving pleasure.

### BMW SERVICE.



**BMW Service Packages\*:** Individual and stress-free, just for you. Individual, well-thought-out servicing solutions carefully tailored to you and your vehicle. With one-off, predictable costs, BMW Service Packages give you complete peace of mind, so you can enjoy owning a BMW to the very fullest. Whether it's fresh from the showroom or already well-travelled – there's a BMW Service Package for every phase of your vehicle's life. All bringing you maximum quality, expertise and value retention, always at reasonable, transparent rates. And always carefully tailored to you and your BMW. Find out just how stress-free truly individual service can be!

[www.bmw.com/serviceinclusive](http://www.bmw.com/serviceinclusive)



**BMW Mobile Service\*:** This service is there for you day and night. As soon as you call, we spring into action, and take care of everything that may need doing after an accident or breakdown, with specially trained technicians working – on site or via telephone – to get your car back on the road. We offer comprehensive, country-specific mobility packages for breakdowns, and insurance that covers you in the event of an accident or theft. So if anything untoward does happen, simply call up the BMW accident hotline and we'll go to work. We'll take care of calling the emergency services, a tow truck, a replacement car, notifying your insurance company and much more. For further information please visit [www.bmw.com](http://www.bmw.com)



**BMW TeleServices\*:** With Condition Based Service, you'll be automatically reminded of your next necessary service appointment on the vehicle screen. Provided you've consented, key vehicle data will be relayed to BMW automatically for analysis. Your assigned BMW service partner will access the information and contact you free of charge to make a service appointment as and when necessary. To access BMW Teleservices, the vehicle must be equipped with the optional Intelligent Emergency Call or ConnectedDrive Services. The service can be deactivated at any time you so desire, and you can change your service partner in the iDrive menu or ConnectedDrive portal. Find out more at [www.bmw.com/teleservices](http://www.bmw.com/teleservices)

### BMW FINANCIAL SERVICE.



**BMW Financial Services\*:** Mobility solutions to meet your needs. BMW Financial Services provides you with attractive leasing, finance and insurance options. To find out more, see the price list or go to [www.bmwfs.com](http://www.bmwfs.com). Your BMW partner will also be glad to draw up an individual offer for you in person.

### THE BMW EXPERIENCE.



**BMW TV\*:** [www.bmw.tv](http://www.bmw.tv) enables you to experience the BMW brand in all its diversity. Features, portraits and background reports provide you with information on automobiles, innovations, sports and lifestyle topics.



**BMW Driving Experience:** The better you control your BMW, the more enjoyment you will derive from driving it. Use our training courses to learn for yourself what it means to reach a car's physical limits on various types of surfaces, and what you have to do to control your vehicle even in extreme situations. For further information please visit [www.bmwdrivingexperience.com](http://www.bmwdrivingexperience.com)



**BMW Welt:** Picking up a car at BMW Welt has always ranked among the best moments for any driver. Turn this moment into one whole unforgettable day: experience the handover of your new BMW as just one part of a programme of activities perfectly tailored to your interests. At BMW Welt, the BMW Group plant, the BMW Museum, the BMW Group headquarters and the BMW Group Classic all combine to provide you with a great experience of an exciting history, a breathtaking present – and spectacular visions for the future. Find out more at [www.bmw-welt.com/en](http://www.bmw-welt.com/en)



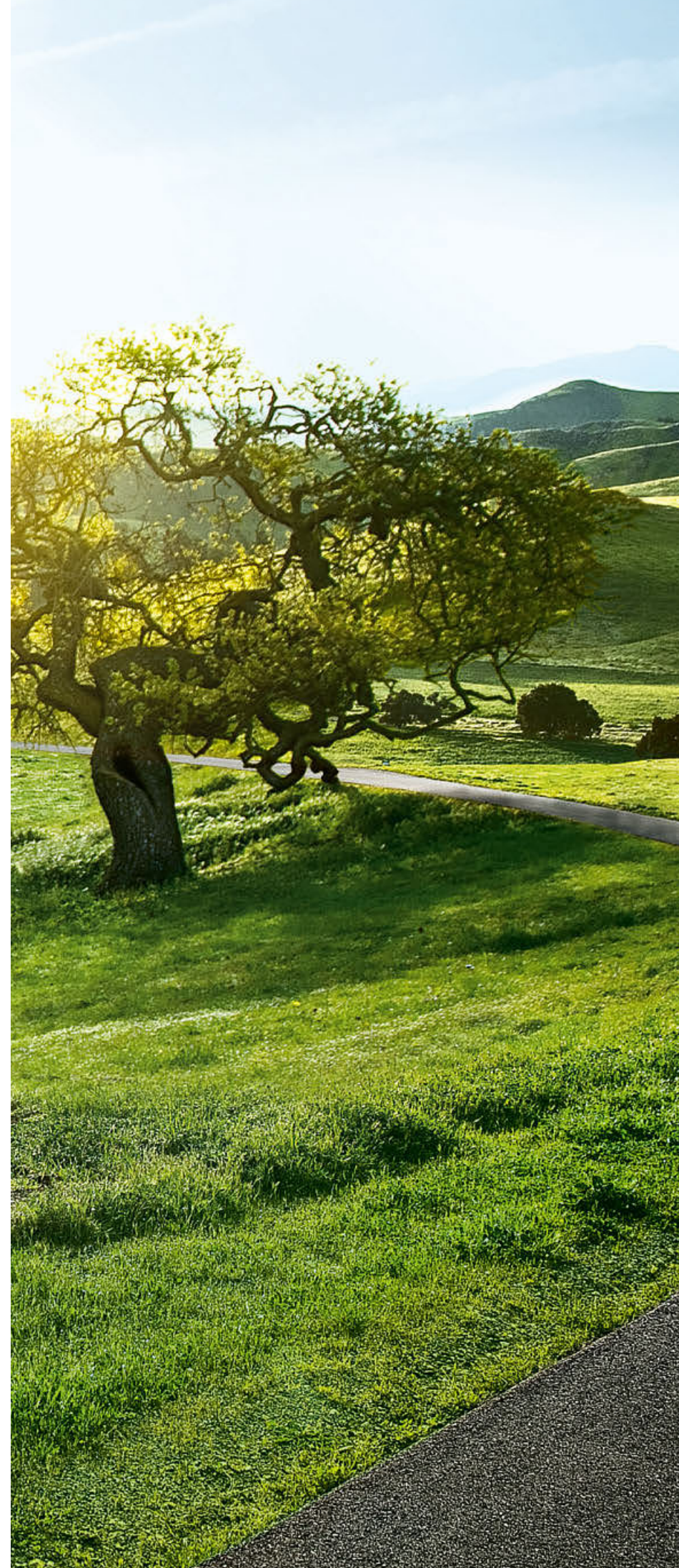
**BMW Magazine:** In BMW Magazine, experience the newest BMW models in front of stunning backdrops. Discover new design trends, travel destinations and the richness of modern life. Encounter people with visionary ideas who are changing the world. Find out more at [www.bmw.com/magazine](http://www.bmw.com/magazine)

\* May not be available in all countries. Please consult your BMW partner.

## SHAPING THE FUTURE – RESPONSIBLY.

In 2017, the BMW Group was once more listed in the Dow Jones Sustainability Index. This makes BMW Group the only company in the automotive industry to be listed without interruption since the index was established. The development of efficient vehicle concepts and environmentally friendly production processes, including recycling, is an integral part of our philosophy. BMW EfficientDynamics and electric vehicles have enabled us to cut CO<sub>2</sub> emissions from our European new-vehicle fleet by more than 42% since 1995. We have also reduced the amount of resources used in production, such as water and energy, by round 34% between 2006 and 2017, with a reduction to 45% of previous levels aimed at for 2020. In terms of other resources (such as volatile organic compounds, process wastewater and waste) our 45% target was met in 2014, and we will continue to work on further improvement. Production at our engine plant in Steyr has been waste-water free since 2007. And of course, at the end of its service life, every one of our vehicles can be easily and economically recycled. To return your end-of-life vehicle, please contact your BMW partner. For more information on this issue please visit our website.

[www.bmw.com/EfficientDynamics](http://www.bmw.com/EfficientDynamics)  
[www.bmwgroup.com/responsibility](http://www.bmwgroup.com/responsibility)  
[www.bmw.com/recycling](http://www.bmw.com/recycling)







**Sheer  
Driving Pleasure**

The models illustrated in this brochure show the equipment and configuration options (standard and optional) for vehicles produced by BMW AG for the German market. Alterations in standard and optional equipment and the configurations available for the different models, as described in this brochure, may occur after 16/11/2017, the date when this brochure went to press, or according to the specific requirements of other markets. Your local BMW Partner is available to provide further details. Subject to change in design and equipment.

© BMW AG, Munich, Germany. Not to be reproduced wholly or in part without prior written permission of BMW AG, Munich.

4 11 006 161 201 2018 BM. Printed in Germany 2018.